



## **North Country Updates - Agriculture, Conservation, Forestry**

This newsletter comes to you from  
UNH Cooperative Extension,  
Coös County Conservation District &  
USDA/Natural Resources Conservation Services,  
Lancaster, NH

Contact:

[Carolyn.McQuiston@nh.nacdnet.net](mailto:Carolyn.McQuiston@nh.nacdnet.net)



## **In this Issue -**

### **Events**

- 2019 - Farm Risk Management Workshops (see article below for dates)
- 2019 - NRCS 2019 Program Signups (see article below for deadlines)
- 2019 - [Spring Sale \(flowers, small fruit & vegetables\)](#) accepting orders now through **March 8**
- 2019 - [NH State Nursery](#) accepting orders now through **March 31**

### **March 2019**

- March 13 - [Maple Sugaring in the North Country: Past, Present & Future](#), Berlin
- March 28 - [Food Safety for Poultry and Rabbit Producers](#), North Haverhill

### **April 2019**

- April 13 - [Dirt-to-Trees-to-Wildlife](#), Training, Randolph (registration required)
- April 16 - [ServSafe Food Managers Certification Course and Exam](#), Lancaster
- April 18 - [Farm Scale Certification Clinic](#), Lancaster (NHDA, Division Weights & Measures)
- April 27 - [Small Fruit Pruning Demonstration](#), Lancaster

### **May 2019**

- May 3 - Foresters MUD Season Breakfast, Berlin (Save the Date, more info to come)
- May 11 - [Spring Ephemerals and Mushrooms Walk](#), Dalton (registration required)
- May 15 - Youth Natural Resources Field Day, Columbia (Save the Date, 5th Grade Teachers)

**Webinars** - If you missed a recent webinar, some are recorded -

[Changes in Tax Law & Impact on Farmers](#)

The Future of the Farm: Estate & Succession Planning - [Inheriting the Farm](#)

The Future of the Farm: Estate & Succession Planning - [Estate Planning](#)

### **In the News**

- [Agriculture Field Specialist](#), for Coös County, Job Announcement
- The Business of Selling Timber, Understanding Tree Volume and Value
- Forestry - Long-Term Agriculture

### **Coös County Conservation District**

- Soil Health Rental Equipment (Coös & Grafton Districts)

### **Home & Garden Education Center**

## Events



### 2019 Farm Risk Management Workshops

Bring your farm's operations to the next level in the new year.

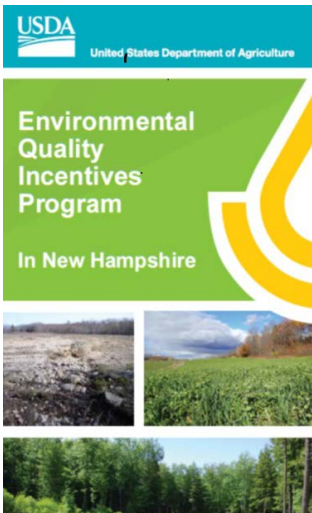
UNH Cooperative Extension's Food & Agriculture team partners with the USDA Risk Management Agency each year for workshops and programs designed to help Granite State agricultural producers grow their farms, make their operations more efficient and improve their businesses.

The 2019 slate of USDA RMA workshops has been set. Mark your calendars now or contact Extension specialists for more information.

Contact [Michal.Lunak@unh.edu](mailto:Michal.Lunak@unh.edu)

Contact - [Carl.Majewski@unh.edu](mailto:Carl.Majewski@unh.edu)

Find workshops here -  
[2019 USDA RMA Workshop](#)



### NRCS, EQIP 2019 Batching Dates

March 15  
April 19  
May 17

#### Agriculture or Forest landowners in New Hampshire

If you are interested in protecting, conserving, or restoring the natural resources on your property through technical or financial assistance, contact your local USDA Natural Resources Conservation Service (NRCS) field office to begin the conservation planning process.

[Contact your local Field Office](#)

[Read More - Press Release](#)

Spring Sale -



## Supports the Coös County Conservation District

Orders due March 8.

Thank you for your support!  
Our spring sale includes flowers, small fruit and vegetable choices.



Visit our website for More details  
& Order forms  
Orders due March 8



## NH State Forest Nursery

On Sale Now - **Orders should be received no later than March 31.**

The Nursery does deliver once each season to county UNH Extension offices. When placing your order, let them know if you want to pick up your order at the County Extension office.

Questions and orders should be directed to the NH State Forest Nursery.  
603-796-2323

NH State Forest Nursery



## Maple Sugaring in the North Country -

### Past, Present & Future

March 13, Wednesday  
5:00PM-8:00PM  
WMCC, Berlin

This event will feature three guest speakers, a cooking demonstration, and a student art and work exhibit, all keeping with the theme of maple sugaring in New Hampshire's Great North Woods.



[Read More](#)



## Food Safety for Poultry and Rabbit Producers

**March 28, Thursday**

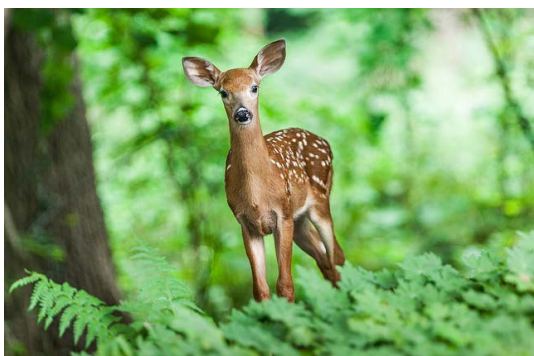
9:00AM-3:30PM

**North Haverhill**

New Hampshire producers can sell poultry & rabbits directly to NH restaurants without USDA inspection. This program fulfills the education requirement specified in the rules and will help producers develop a working plan for providing safe meat products for this market.

Even if you do not plan to sell to restaurants, this program would also be appropriate for those looking to learn more about best practices when processing their own poultry or rabbits.

[Read More](#)



## Dirt-to-Trees-to-Wildlife

**April 13, Saturday**

10:00AM-2:00PM

**Randolph**

Dirt to Trees to Wildlife (DTW) is an online tool consisting of DTW Mapper and it's companion website housing information used by DTW Mapper to create reports about an area of interest.

Identifying opportunities to enhance wildlife habitats requires knowledge, skills and experience related to interactions between soils, vegetation and the wildlife that use each type of vegetation. A new online tool helps professional managers simplify the process of compiling these complex interactions. The tool, called Dirt to Trees to Wildlife(DTW), simply requires a user to identify a piece of land by drawing it on a map. Behind the scenes, DTW identifies the soils on that land, the vegetation naturally supported by that soil, and wildlife breeding habitats supported by each vegetation type. This information is compiled in a handy report to inform management decisions.

[More Information on this Training](#)

[More Information on D-T-W](#)

## Farm Scale Certification Clinic

**April 18, Thursday**

12:00PM-2:00PM



North Country Resource Center, Lancaster

NH Department of Ag  
(additional clinics across the state)



## Small Fruit Pruning Demonstration

April 27, Saturday  
1:00PM-3:00PM

Pratts Raspberry Blueberry Farm  
Lancaster

UNH Extension



## Foresters MUD Season Breakfast

May 3, Friday  
8:00AM

Save the Date!



## Spring Ephemerals and Mushroom Walk

May 11, Saturday  
10:00AM-1:00PM

Dalton

[More information & How to Register](#)

## Annual Youth Natural Resources Field Day

### Natural Resources Field Day

For Coös County 5<sup>th</sup> Grade Classes  
Visit Unique Natural Resource Stations!

Students will alternate through seven outdoor presentations by natural resources professionals. Rain or Shine. Be prepared to spend the day outdoors with rain gear, hat, boots, bug repellent, sun screen, lunch, etc!

Agricultural crops. (TBD)



What do cows have to do with it!  
(and pigs and chickens and turkeys and ...)  
Joyce Brady, Co-Owner, Operator, CJ&J Farm

Play with wild pandas, crocodiles and cougars (Really?)

Will Steats, Regional Wildlife Biologist, NH Fish & Game Department



Get wet with water critters!

Diane Timmins, Fisheries Biologist & Judy Tumosa, Aquatic Resources Educator,  
NH Fish & Game Department

Soil? I thought it was just dirt!

Fred Smith, Soil Conservationist, USDA/NRCS



What do foresters do besides hike and eat granola?  
David DeGruttola, Forester, LandVest | Timberland

Farm Safety – How to stay safe around machinery!  
Chris Brady, Co-Owner, Operator, CJ&J Farm  
and FFA Chapter, Canaan, VT



## 5th Grade Teachers - Save-the-Date!


May 15, Wednesday  
8:30AM-2:00PM  
Columbia

Contact: the [Coös County Conservation District](#)  
to register your 5th grade class

## In The News

**EMPLOYMENT OPPORTUNITY**


APPLY ONLINE TODAY  
[JOBS.USNH.EDU/postings/31646](https://JOBS.USNH.EDU/postings/31646)



**AGRICULTURE FIELD SPECIALIST**

The Coös County Field Specialist will deliver research-based educational programs and technical assistance to farmers, agricultural business owners, communities and individuals interested in agriculture. In collaboration with a team of colleagues, the Field Specialist will develop and implement innovative, relevant, and impactful educational programs that enhance the profitability and sustainability of agriculture and farm-based businesses in Coös County and statewide. The successful candidate will have expertise in livestock production or agricultural business mgmt.

APPLY ONLINE TODAY  
[JOBS.USNH.EDU/postings/31646](https://JOBS.USNH.EDU/postings/31646)



The University System of New Hampshire is an Equal Opportunity/Equal Access/Affirmative Action employer. The University System is committed to creating an environment that values and supports diversity and inclusiveness across our campus communities and encourages applications from qualified individuals who will help us achieve this mission. The University System prohibits discrimination on the basis of race, color, religion, sex, age, national origin, sexual orientation, gender identity or expression, disability, veteran status, or marital status. Application by members of all underrepresented groups is encouraged. Hiring is contingent upon eligibility to work in the U.S.

## Job Announcement

### Field Specialist Agriculture, Coös County

This position is based at UNH Extension's Coös County office in Lancaster, NH.

Food and Agriculture Field Specialists deliver research-based educational programs and technical assistance to farmers, agricultural business owners, communities, and individuals interested in agriculture.

The Coös County Food and Agriculture Field Specialist, individually and in cooperation with UNH Extension colleagues and the Coös County Extension Advisory Council, determines educational needs of agriculture clientele and develops educational programs to meet these needs.

[Learn More](#) and [Apply Online](#)

## The Business of Selling Timber, Understanding Tree Volume and Value





by Brendan Prusik, Forestry Field Specialist

As trees in your forest grow, they become more valuable. A larger tree can be more valuable because it has more volume to make more product. The bigger your trees are, the more they are worth—but that’s not the whole story. As trees grow, they can also increase in grade (quality). Each grade increase can add dramatic value that far exceeds the increase in value from volume growth alone.

[Read More](#)



## Forestry - Long-Term Agriculture

by Jim Frohn, Forestry Field Specialist

Forestry is essentially long-term agriculture. Someone I met with an agricultural background who is now involved with forestry described foresters as “slow farmers”. The crops are the trees, but instead of harvesting each crop annually, it’s a much longer time frame. Even in the most productive timber producing regions (the US South and Pacific Northwest, for example), the final crop, sawtimber, is usually harvested after at least 30-40 years, and in the case of the northeastern hardwoods, up to 100-120 years.

Thinking about forestry as a form of agriculture isn’t new. The Tree Farm program was developed in the early 1940s, in a departure from the old practice of logging the merchantable trees on a parcel of land and moving on, to a focused practice of “growing trees as a crop”.

[Read More](#)

## Coös County Conservation District (CCCD)

### Coös County Conservation District

4 Mayberry Lane

Lancaster NH 03584

603-788-4651 ext 102

Visit our website - [cooscountyconservation.org](http://cooscountyconservation.org)

email - [da.cccd@gmail.com](mailto:da.cccd@gmail.com)



Our office is located in the USDA Service Center,  
Route 3, Lancaster, NH

## Soil Health Rental Equipment

Click on the equipment for more information.



[Wood Ash Spreader  
& Rental Terms](#)

[Coös County](#)



[Hi-Tunnel Tool  
Loan Program,  
List of Tools &  
Loan Process](#)

[Coös County](#)



[No-Till Seeder  
& Rental Terms](#)

[Grafton County](#)

The KED-72 is 6' wide and capable of planting 9 rows, with 8" spacing. KASCO recommends a 25hp+ tractor, with sufficient lift capacity to handle approximately 1600 lbs. on back.



[Aerway  
& Rental Terms](#)

[Grafton County](#)

AWMP-675-AG-4 Selfload AerWay: 45-75HP Tractor with hydraulics recommended. Cultivation width 7.5'; Weight 2150 lbs.

## Home or Garden Question?



Monday through Friday from 9:00 a.m. to 2:00 p.m. highly trained master gardeners are available to answer your questions about gardening, lawns, pests, fruits and vegetables, food safety and more. For research-based information you can trust, pick up the phone, send an email or stop by today!

[Education Center & Info Line](#)

The [Education Center](#) at UNH Cooperative Extension offers a number of services including:

- Answers to gardening questions from Cooperative Extension Master Gardener residents via email and the Hotline 877-398-4769 or walk-in assistance.
- Master Gardener Volunteer Training Educational Programs for the general public.
- Public presentations by Master Gardener Volunteers on topics such as seed starting, composting, container gardening, and seed saving.

For more information on a variety of horticulture topics visit the UNH Cooperative Extension [website](#).



**When in doubt..  
UNH Cooperative Extension  
ID services may help.**





[Soil Testing Services](#)

[Insect Identification Services](#)

[Plant Diagnostic Lab](#)

[NH Bugs](#)

## Additional Links

[Subscribe to this and other UNH Extension newsletters](#)

[Archives of this newsletter](#)

[UNH Extension Agriculture](#)

[UNH Extension Natural Resources](#)

[Coös County Conservation District](#)

[USDA / NRCS in NH](#)

Coös County UNH Cooperative Extension  
629 Main Street  
Lancaster, NH 03584

Monday - Friday, 8:00 a.m. - 4:00 p.m.

For more information  
[visit our website](#), [email us](#), or call 603-788-4961



### About UNH Cooperative Extension

Extension is at work in every New Hampshire county, making the state's key industries stronger, developing vibrant communities and municipal leaders, fostering healthy families and an informed and engaged citizenry, and keeping the state's natural resources healthy and productive.

The University of New Hampshire Cooperative Extension is an equal opportunity educator and employer.  
UNH, USDA, and NH Counties cooperating.

[Extension Home](#) | [Locations](#) | [Blog](#) | [Events](#) | [News](#) | [Resources](#) | [About](#)

[Privacy Policy](#)

University of New Hampshire - Main St. - Durham, NH 03824