



North Country Updates - Agriculture, Conservation, Forestry

This newsletter comes to you from
UNH Cooperative Extension,
Coös County Conservation District &
USDA/Natural Resources Conservation Services,
Lancaster, NH

Contact:

Carolyn.McQuiston@nh.nacdn.net



In this Issue -

August 2019

- 3 - [Randolph Community Forest Annual Forest Day](#), Randolph
- 10 - [Farm to Fork Festival](#), Colebrook
- 21 - [Summer Mushroom and Forest Walk](#), Dalton (registration required)
- 23 - [High-Tunnel Farmer to Farmer Workshop](#), Randolph (5-7pm)

September 2019

- 4 - [Back Pack Sprayer Calibration Event](#), Lancaster (credits pending)
- 5 - [Tree of Heaven Workshop, Concord](#) (3.5 credits available)
- 6 - [Natural Resources Stewards Program Begins](#), Canterbury
- 17 - Pesticide Applicator Trainings Begin (see below for more information)

October 2019

- 19 - [NH Timber Harvesting Council Loggers & Truckers Convention](#), Shelburne
- 23 - NHTOA & NH-DES, Timber Talks, NH Wetlands Rules, Lancaster

In The News

Pest Alert - for Berry Growers, [Spotted Wing Drosophila](#) (SWD)
[New Hampshire 2020 Forest Action Plan, Survey](#)
Coös County Conservation District, [2019 Fall Bulb Sale](#)
[UNH Graduate, More than a Degree, Returning to Coös County](#)
[North Country Gleaners](#)

Coös County Conservation District

[Soil Health Rental Equipment](#)

[Home & Garden Education Center](#)

[UNH ID Labs - Soil, Insect, Plant Disease](#)

Events



Randolph Community Forest Randolph, NH

August 3, Saturday
9:00am

One of the joys and, sometimes, the annoyances of living where we do is the contact we have with the wild animals around us. Even when irked by the deer eating our lettuces or the bear destroying a bird feeder left out too long, we are glad that they are there. This year, the annual Forest Day's focus might be called the collateral wildlife habitat activities of the Randolph Community Forest.

The day will begin, with a discussion in the Town Hall.

The Randolph Forest Commission and its LandVest partners will present a report to the community of the activities carried out on the Forest during the past year and of the major events proposed for 2019-2020.

A description of the Dirt-to-Trees-to-Wildlife project and its successful launch. This will include a brief illustration of its potential for use on the Community Forest.

The theme of the day will be introduced by a representative from New Hampshire Fish & Wildlife with a review of the work of that agency in the North Country.

The tour will begin at about 10:30 am, after the discussion at the Town Hall.

[More Information](#)

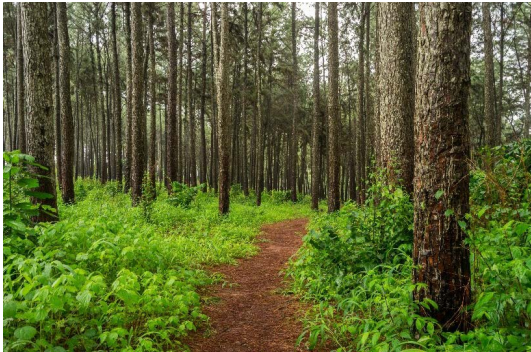
Farm to Fork Festival Colebrook, NH

August 10, Saturday
9:00am-3:00pm



We are proud to present the first annual NH Farm to Fork Festival. This event is to support local farmers as well as encourage residents, like you, to get to know your neighborhood farms and farmers. With live cooking demonstrations, supervised children's activities, interactive booths, workshops, presentations from local farmers, as well as live music, tours of our organic farm and Ecovillage there will be something for the whole family!

[More Information](#)



Summer Mushroom and Forest Walk

Dalton, NH

August 21, Wednesday

11:00am-2:00pm

Join the Dannis Family and Master Naturalist, [Dr. Rick Van de Poll](#), for a tour of a rich and diverse woodland in the upper Connecticut Valley region. The views alone are breathtaking not to mention the diversity of old growth forests and ridgeline habitats.

After our walk, we will discuss mushrooms around the table, where poisonous will be separated from edible, and medicinal will be highlighted.

Please register - space is limited.

carolyn.mcquiston@nh.nacdnet.net

More information about the property

<https://abovethefifteenmilefalls.com/>



[More Information](#)

High Tunnel Farmer to Farmer



Workshop

Randolph, NH

August 23, Friday

5:00pm-7:00pm

Please bring your questions, we'll put our heads together and discuss the issues of the season. Insect, weed or disease samples welcome, sealed in jars or zippered bags please! Partners from the Natural Resources Conservation Service and the Conservation District will be on hand to answer your questions about their programs and we'll try out some of the tools from the soil health rental equipment program!

Contact:

Heather Bryant, UNH Cooperative Extension

Email - Heather.Bryant@unh.edu

[More Information](#)



Backpack Sprayer Calibration Event

Lancaster, NH

September 4, Wednesday

3:45pm-5:30pm

This will be a hands on demonstration to learn how to calibrate your backpack sprayer. This meeting is geared towards vegetable and tree fruit growers as well as landscapers. Certified organic growers using neem, Bt or kaolin clay are encouraged to attend.

Olivia Saunders and George Hamilton, UNH Extension Field Specialists, will lead a hands-on workshop to help you evaluate the effectiveness of your spray applications. Key components include nozzle selection, correct calculations, and calibrating for your sprayer pressure at your walking speed.

Contact : registration and questions -

Email Olivia.saunders@unh.edu or

Call 603-447-3834

(please leave your - business name, phone

number and email address, and the number of employees attending.

Pesticide credits pending approval.

[More Information](#)



Tree of Heaven Workshop

Concord NH

September 5, Thursday

8:00am-12:00pm

Pesticide Applicator credits available (3.5)

Who should attend?

Foresters, Arborists, Department of Transportation Foremen, Conservation Commissioners, Licensed Pesticide Applicators

Cost: \$25 NHTOA member, \$50 Non-member

Contact : Phone: 603-224-9699

Email: info@nhtoa.org

[Learn More & How to Register](#)



New Hampshire
Department of Agriculture,
Markets & Food



Extension



Natural Resources Stewards Program Begins

Canterbury, NH

September 6 - November 22

Fridays for 12 weeks

8:30am - 4:00pm

The Natural Resources Steward program offers a comprehensive education and volunteer support network for people who want to learn, explore and share the nature of NH. It starts with a hands-on course that brings people together to explore NH's ecosystems - how trees, plants, soil, fungi, water, wildlife and even humans are interconnected, and how we can reduce our impact and restore and protect the nature we are a part of. Class fills quickly, so register early!

Cost - \$295.00

Contact : Mary Tebo, Urban & Community

Natural Resources Field Specialist
Email: mary.tebo@unh.edu
Call: 603-641-6060

[Learn More About the Program
& How to Apply](#)



Pesticide Safety Education Program

Concord NH

Various dates in September
8:15am-5:00pm

All locations are in Concord
Sept 17 - Core Training, NHDES
Sept 18 - Turf, NHDES
Sept 19 - Ornamental, location:TBD
Sept 23 - Right of Way, NHDES
Sept 24 - Mosquito, Biting Fly & Tick, NHDES
Sept 24 - Core Training, Dept Health & Human Services

Cost: \$150 per class
Study Materials required - [order online](#)

Contact : Rachel Maccini
Call: 1-877-398-4769
email: pesticide.safety@unh.edu
or rachel.maccini@unh.edu

[Learn More & How to Register](#)



NH Timber Harvesting Council Loggers & Truckers Convention

Shelburne, NH

October 19, Saturday
5:00pm

The New Hampshire Timber Harvesting Council is celebrating the logging profession with loggers and truckers from across the state. With generous support from the forest products industry, the Loggers & Truckers Convention brings together the logging community to discuss issues, socialize and recognize the new graduates of the New Hampshire Professional Loggers Program.

Contact: NHTOA
Phone: 603-224-9699
Email: info@nhtoa.org

[Learn More &
How to Register](#)



NHTOA & NH-DES Timber Talks, Wetland Rules Lancaster, NH

October 23, Wednesday
5:00pm

Timber Talks are to review and discuss the newly adopted state wetland rules (the effective date for the rules is December 15, 2019).

Learn about the new wetland permitting requirements, field standards, forms, and online tools.

Participants will have an opportunity to ask questions of NHDES permitting personnel, and will receive a copy of the guidance document.

Three Meeting Locations -
All on Wednesdays at 5:00pm

October 23 - Lancaster -
North Country Resource Center

November, 6 - Concord -
Conservation Center

December 4, Hillsborough -
NH State Fox Forest

There is no cost to attend these meetings, however we request that you register, call or email -

Contact: NHTOA
Phone: 603-224-9699
Email: info@nhtoa.org

[NHTOA Website](#)

In The News



Pest Alert - Berry Growers

This week spotted wing drosophila (SWD) have been caught in traps as far north as Concord and Lebanon in NH, and trap catches have been widespread in Maine.

This means they could be in Coös County soon if they haven't arrived already.

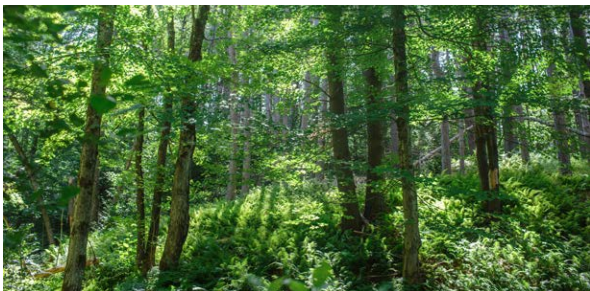
If you have not heard of it before, the SWD is an invasive species of fruit fly that attacks soft fruit crops such as berries, grapes and cherries and causes them to quickly lose eating quality.

If you are growing these crops for home use, we recommend the following management strategies:

- Pick daily
- Separate and discard any soft fruit at the time of picking
- Refrigerate the fruit as immediately as possible after picking
- Rake up any berries that fall on the ground
- Freezing anything you don't plan to eat in the next couple of days also significantly decreases the risk.

For commercial growers and those interested in SWD biology we have additional information on our website.

[Read More](#)



NH Forest Action Plan Survey

Every 10 years, the State develops a statewide plan that helps guide forest policy and action for the subsequent decade. New Hampshire is beginning the process of developing the 2020 Plan by reaching out to the public with a short survey.

Susan Francher, planner with the NH Division of Forests & Lands, invites you to take the NH Forest Action Plan survey.

Survey results will be combined with input



from public listening sessions and stakeholder meetings; and used to guide development of the plan and identify priorities for policy, management and resource allocation decisions over the next 10 years.

Questions, contact Susan Francher -
Call 603-271-2214
email susan.francher@dncr.nh.gov

[Link to the Survey](#)



2019 Fall Bulb Sale

Plant bulbs this Fall for beautiful Spring Flowers.

Taking orders now, please order by September 1.

Proceeds help fund conservation projects in Coös County.

[More information and how to order](#)



UNH Graduate, more than a degree -

For Jessica Fury, an animal science major and Groveton native, graduation will mean moving out of her apartment at the UNH Organic Dairy and leaving her beloved Jersey cows, including Andie, who's calf is the first Fury ever delivered. But it also means a new opportunity to care for some special creatures in Jefferson and the beginning of a career devoted to animal

health and wellbeing.

[Read More](#)

donate

GROWING MORE THAN YOU CAN EAT?

TIRED OF EATING TOMATOES?

glean (v.)
to gather leftover fruits and vegetables that would otherwise go to waste

YOU CAN HELP BY DONATING EXCESS FOOD THAT WOULD OTHERWISE GO TO WASTE. TAPROOT'S NORTH COUNTRY GLEANERS WILL COLLECT, PROCESS & DISTRIBUTE THESE CROPS TO:

- FOOD PANTRIES
- SOUP KITCHENS
- SENIOR HOUSING
- SUMMER RECREATION PROGRAMS

ZUCCHINI COMING OUT OF YOUR EARS?

taproot
farm & environmental education center
WWW.TAPROOTNH.ORG

SIGN UP:
GLEANNING@TAPROOTNH.ORG
603-631-7790

Harvard Pilgrim HealthCare Foundation

North Country Gleaners

Growing more than you can use?

glean - to gather leftover fruits and vegetables that would otherwise go to waste.

Donate - excess food crops that would otherwise go to waste.

Volunteer - to help pickup and distribute.

Email - gleaning@taprootnh.org
or Call - 603-631-7790

[Read More](#)

Coös County Conservation District (CCCD)



Coös County Conservation District

4 Mayberry Lane
Lancaster NH 03584
603-788-4651 ext 102
Visit our website - cooscountyconservation.org
email - da.cccd@gmail.com

Our office is located in the USDA Service Center,
Route 3, Lancaster, NH

Soil Health Rental Equipment

Click on the equipment for more information.



[Wood Ash Spreader & Rental Terms](#)
Coös County

[No-Till Seeder & Rental Terms](#)
Grafton County



[Hi-Tunnel Tool Loan Program, List of Tools & Loan Process](#)
Coös County

[Aerway & Rental Terms](#)



The K12D-72 is 6' wide and capable of planting 9' rows, with 8" spacing. KASCO recommends a 55hp+ tractor, with sufficient lift capacity to handle approximately 1000 lbs. on back.



AWMP-075-AG-4 Salford AerWay: 45-75HP Tractor with hydraulics recommended. Cultivation width 7.5'. Weight 2150 lbs.



Home or Garden Question?



Monday through Friday from 9:00 a.m. to 2:00 p.m. highly trained master gardeners are available to answer your questions about gardening, lawns, pests, fruits and vegetables, food safety and more. For research-based information you can trust, pick up the phone, send an email or stop by today!

Education Center & Info Line

The [Education Center](#) at UNH Cooperative Extension offers a number of services including:

- Answers to gardening questions from Cooperative Extension Master Gardener residents via email and the Hotline 877-398-4769 or walk-in assistance.
- Master Gardener Volunteer Training Educational Programs for the general public.
- Public presentations by Master Gardener Volunteers on topics such as seed starting, composting, container gardening, and seed saving.

For more information on a variety of horticulture topics visit the UNH Cooperative Extension [website](#).



When in doubt..
UNH Cooperative Extension
ID services can help.



- Soil Testing Services
- Insect Identification Services
- Plant Diagnostic Lab
- NH Bugs

Additional Links

[Subscribe to this and other UNH Extension newsletters](#)

[Archives of this newsletter](#)

[UNH Extension Agriculture](#)

[UNH Extension Natural Resources](#)

[Coös County Conservation District](#)

[USDA / NRCS in NH](#)

Coös County UNH Cooperative Extension
629 Main Street
Lancaster, NH 03584

Monday - Friday, 8:00 a.m. - 4:00 p.m.

For more information
[visit our website](#), [email us](#), or call 603-788-4961

About UNH Cooperative Extension

Extension is at work in every New Hampshire county, making the state's key industries stronger, developing vibrant communities and municipal leaders, fostering healthy families and an informed and engaged citizenry, and keeping the state's natural resources healthy and productive.

The University of New Hampshire Cooperative Extension is an equal opportunity educator and employer.
UNH, USDA, and NH Counties cooperating.



[Extension Home](#) | [Locations](#) | [Blog](#) | [Events](#) | [News](#) | [Resources](#) | [About](#)

[Privacy Policy](#)

University of New Hampshire - Main St. - Durham, NH 03824