



North Country Updates - Agriculture, Conservation, Forestry

This newsletter comes to you from
UNH Cooperative Extension,
Coös County Conservation District & USDA/Natural
Resources Conservation Services, Lancaster, NH

Contact:

Steven.Turaj@unh.edu

or

Carolyn.McQuiston@nh.nacdnet.net



In this Issue -

Events

- Nov 3 - Managing Northern Woodlands for Wildlife
- Nov 8 & 15 - Produce Safety Alliance Grower Training (2 locations)
- Nov 14 & 15 - North Country Dairy Seminar & Trade Show, (2 locations) Whitefield & W Leb
- Nov 16 - Basics of Farm Transfer Planning, AMC Highland Center, Bretton Woods

In the News

- Steve Turaj, On to New Adventures
- CCCD Native Plant Nursery Update
- Cover Crop, Aerial Seeding Update
- Bur Cucumbers, End of Season Observation
- FSMA For Maple Producers
- EAB & Ash Wood Update, Oct 2018
- UNH ID Labs - soil, insect, plant disease

CCCD Information

- Soil Health Rental Equipment
- Long Island Sound Watershed

Home & Garden Education Center

Additional Links of Interest

Events



Managing Northern Woodlands for Wildlife

Maidstone, VT
9:00am-12:00pm



November 3, Saturday

Interested in learning more about trees and wildlife habitat in the North Country? Join forest industry specialists for an interesting perspective on our northern forests, and the plant communities that provide habitat for a multitude of wildlife species. Workshop emphasis will center on wildlife habitat management, silvicultural applications and techniques, and management of early successional crop trees. Participants should wear sturdy shoes and be prepared to walk on uneven ground. Hard hats and vests will be provided.

CREDITS - This workshop offers -
3.0 category 1 CFE credits - AND -
3.0 Professional Loggers Program credits.

Location: Maidstone State Park
4858 Maidstone Lake Rd
Maidstone, VT 05905
(Intersection of Vermont Route 102 and Maidstone Lake Road - look for NHTOA signs.)

Contact: info@nhtoa.org
603-224-9699

[More Information & How To Register](#)



Produce Safety Alliance Grower Training

2 Locations

8:30am-5:30pm (both days)

November 8, Thursday

White River Junction, VT

November 15, Thursday

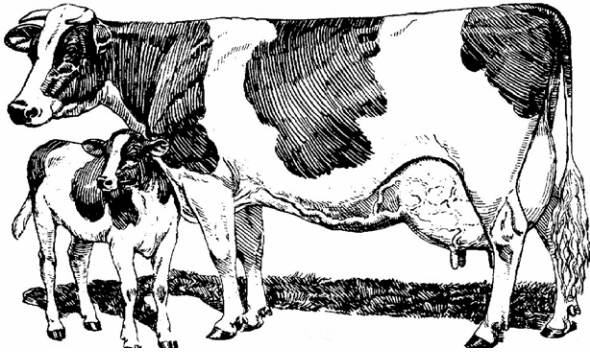
Portsmouth, NH

This training is geared toward fruit and vegetable growers and others interested in learning about produce safety, the Food Safety Modernization Act (FSMA) Produce Safety Rule, Good Agricultural Practices (GAPs), and co-management of natural resources and food safety.

Contact: Heather.Bryant@unh.edu

[More Information & How To Register -
White River Jct. Event](#)

[More Information & How To Register -
Portsmouth Event](#)



North Country Dairy Seminar & Trade Show

2 Locations

9:00am-3:00pm (both days)

Wednesday, November 14

Fireside Inn & Suites, West Lebanon, NH

Thursday, November 15

Inn At Whitefield, Whitefield, NH

Contact for each event:

Steven.Turaj@unh.edu - Whitefield

Michal.Lunak@unh.edu - W Lebanon

[More Information & How to Register
- West Lebanon -](#)

[More Information & How to Register
- Whitefield -](#)

For the past 41 years, the NH Dairy Practices Committee (NH DPC) has invited speakers to New Hampshire to speak to farm owners, workers, business cooperators, students, and the general public at the New Hampshire Dairy Management Conference.

This year the NH DPC committee's featured morning speaker will be covering new research findings in precision farming pertaining to dairy cattle that are easy and inexpensive to implement. During the afternoon session, representatives from New England states will discuss support programs that help farmers overcome low milk price periods.



Basics of Farm Transfer Planning - Getting the Conversation Started

9:00am-3:30pm

Friday, November 16

AMC Highland Center, Bretton Woods NH

This full-day workshop will focus on covering topics that farm families are thinking about as they consider the future

of the farm. Extension specialists and practitioners in the areas of estate and succession planning will present topics on legal considerations, business planning, estate planning, and methods of transferring business ownership. Attendance from both the farm owner and the next generation is highly encouraged.

Contact: call or email - 603-527-5475
Kelly.McAdam@unh.edu

[More Information & How to Register](#)

In The News



Steve Turaj - Retires

Farewell from Steve

Forgive me a final bit of humor, as this will be my last official contribution to our newsletter...

As I have decided to leave the UNH Cooperative Extension -after 30+ years- and retire the end of November. Therefore, I'm now sooo short I can hardly see over the top of my boots!

Good Wishes to you all. Thanks for your Trust and Support over these many years!

Steve

Many Thanks to my Friends in New Hampshire's North Country for their trust and support over the years. By my reckoning I count over 40 years of service since I left home for active military duty that Autumn of 1974, so long ago:

US Army – Captain Combat Engineers;
USDA – County Supervisor, Farmers Home Administration;
UNH – Cooperative Extension

Thirty-five of these years have been in Coös County. It's land and people will always have a place in my heart.
Steve



Those are BIG boots to fill Steve!

Thank You for a job Well Done!! Not just the expertise in the field and the willingness to research new things but also for your incredible thinking outside the box, patience and sense of humor.

You Will be greatly missed, for sure!!

Wishing you well on your new adventures!
Congratulations!

Steve Turaj
Field Specialist, Forage Crops
UNH Cooperative Extension
Lancaster, NH (603)788-4961



Native Plant Nursery

Very productive late fall work day!
Thank you!

It has been a long road to get here. the new road is complete, well is in, tool shed is in place, planting has begun. Fencing is up, gate is up. Plants are growing!

With support from Town of Columbia, SCC, Moose Plate Grant, local supporters and volunteers, we are well on our way to a productive native plant nursery!



Cover Crop Update

Helicopter cover crop overseeding of field corn. NRCS/USDA program. This year in the northern half of the county.

(left) A close-up of cereal rye, oats and tillage radish (at turkey quill). The Rye, also called Winter Rye is a nice choice in particular for later seedings. It will germinate at temperatures as low as 34 degrees and continue to grow if above 38. Besides protecting soils from erosion they all scavenge up any left over nutrients for use by next year's crop.

(below) Photos approximately a month after aerial seeding. Decent seed distribution and germination, the growing season is just too short up here to get much growth! Better than bare soil for sure though.



Bur Cucumber

End of Season Observations -

A weed I worry about is Bur Cucumber which seems to be increasingly



common in parts of Grafton County cornfields. Haven't (yet) observed it in Coös or Carroll Counties, although I'm concerned its seeds may be introduced in some manner. - the most effective preventive measure is exclusion -The first picture illustrates the difference between Bur (on top) and the more common Wild cucumber (bottom) which is not of much concern. The Bur can overtop field corn leaving a hard to deal with tangled mass, as seen in the second picture.



FSMA for Maple Producers

UNH Extension had begun a project to develop educational tools and events for Maple Producers who may need to comply with the Food Safety Modernization Act (FSMA).

The first tool is a flow chart designed to help you determine where and if your business falls under FSMA.

Soon to be released is a second tool that asks you a series of questions designed to help you dive deeper into the topic and begin to determine what you need to do to comply.

Also stay tuned for a two day winter workshop series planned for December and January.

Contact: Heather.Bryant@unh.edu



Veteran-Farmer Initiative

We will continue our work in support of Veterans interested in learning more about agricultural employment opportunities and skills.

Our most recent workshop, 'below the Notches' this Fall, was at a new, Veteran operated, diversified livestock and vegetable farm. Small-scale, we've been calling them "satellite workshops" sponsored by Veterans, often on a weekend, seems to be a good approach.

We do have some limited grant funding by NCAT Veteran Beginner Farmers and USDAs Risk Management Agency to help defray costs for hosts, veteran attendees, and to bring in speakers. I ask any Farmers or Vets who would like to join this effort - to encourage new farmers and welcome Vets back to the land - to connect with us.

With my imminent retirement the best contacts persons are two members of our team:

Southern NH: Dot Perkins in Merrimack County

Dorothy.Perkins@unh.edu

Northern NH: Mike Lunak in Grafton County Michal.Lunak@unh.edu

Steve Turaj

Field Specialist, Forage Crops UNH
Cooperative Extension Lancaster, NH
(603) 788-4961

NH Farm Bureau



Firewood EAB Quarantine Revised

Significant changes in the emerald ash borer populations and distribution in New Hampshire warranted the elimination of New Hampshire's EAB regulatory program, as of October 1, 2018. What does this mean?

The in-state EAB quarantine was eliminated. The movement of ash wood products (e.g., firewood, ash logs, ash chips) **within the state** of New Hampshire is no longer regulated.

The federal EAB quarantine is still in place.



The exterior firewood quarantine is still in place.

Firewood cannot be brought into New Hampshire from Maine, Massachusetts, Vermont or any other state unless it is moved with a state of New Hampshire compliance agreement.

NH Dept of Ag, news release
October 8, 2018

[Read More NHBugs.org](#)



**When in doubt..
UNH Cooperative
Extension
ID services may help.**

[Soil Tests](#)

[Insect ID](#)

[Plant Diagnostic Lab](#)



Coös County Conservation District (CCCD)



Coös County Conservation District

4 Mayberry Lane
Lancaster NH 03584
603-788-4651 ext 102
Visit our website - cooscountyconservation.org
email - da.cccd@gmail.com

Our office is located in the USDA Service Center,
Route 3, Lancaster, NH

Soil Health Rental Equipment



[More Information](#)

[Wood Ash Spreader
& Rental Terms](#)

[More Information](#)

[Hi-Tunnel Tool
Loan Program,
List of Tools &](#)

Coös County



Loan Process
Coös County



The KED-72 is 6' wide and capable of planting 9 rows, with 8" spacing. KASCO recommends a 25hp tractor, with sufficient lift capacity to handle approximately 1600 lbs. on back.

More Information
No-Til Seeder
& Rental Terms
Grafton County



AWMF-075-AG-4 Salford AerWay, 45-75HP Tractor with hydraulics recommended. Cultivation width 7.5'. Weight 2150 lbs.

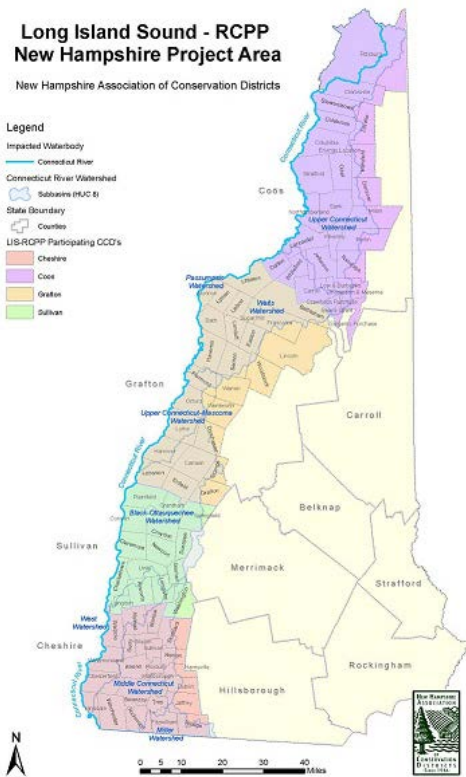
More Information
Aerway
& Rental Terms
Grafton County

Long Island Sound - RCPP New Hampshire Project Area

New Hampshire Association of Conservation Districts

Legend

- Impacted Waterbody
- Connecticut River
- Connecticut River Watershed
- Saboteur (HUC 6)
- State Boundary
- County
- LISW-RCPP Participating CCC's
- Cheshire
- Coös
- Grafton
- Sullivan



Long Island Sound Watershed - Regional Conservation Partnership Program (LISW-RCPP)

Reducing Nitrogen and sediment delivery to the CT River and its tributaries is the focus of our participation in this project.

Farmers in the NH Connecticut River Watershed can work with Bill Foshier, Project Agronomist for NH Association of Conservation Districts, on resource assessments, farm conservation plans and/or comprehensive nutrient management plans.

To learn more, contact Bill Foshier, NHACD Project Agronomist.
email - BillFoshier@gmail.com
call or text - 413-335-5275

[More information - NH's participation](#)

[LISW Project Website](#)

Home or Garden Question?



Monday through Friday from 9:00 a.m. to 2:00 p.m. highly trained master gardeners are available to answer your questions about gardening, lawns, pests, fruits and vegetables, food safety and more. For research-based information you can trust, pick up the phone, send an email or stop by today!

[Education Center & Info Line](#)

[Soil Testing Services](#)

[Insect Identification Services](#)

The [Education Center](#) at UNH Cooperative Extension offers a number of services including:

- Answers to gardening questions from Cooperative Extension Master Gardener residents via email and the Hotline 877-398-4769 or walk-in assistance.
- Master Gardener Volunteer Training Educational Programs for the general public.
- Public presentations by Master Gardener Volunteers on topics such as seed starting, composting, container gardening, and seed saving.

For more information on a variety of horticulture topics visit the UNH Cooperative Extension [website](#).

Additional Links

[Subscribe to this and other UNH Extension newsletters](#)

[Archives of this newsletter](#)

[UNH Extension Agriculture](#)

[UNH Extension Natural Resources](#)

[Coös County Conservation District](#)

[USDA / NRCS in NH](#)

Coös County UNH Cooperative Extension
629 Main Street
Lancaster, NH 03584

Monday - Friday, 8:00 a.m. - 4:00 p.m.

For more information
[visit our website](#), [email us](#), or call 603-788-4961



About UNH Cooperative Extension

Extension is at work in every New Hampshire county, making the state's key industries stronger, developing vibrant communities and municipal leaders, fostering healthy families and an informed and engaged citizenry, and keeping the state's natural resources healthy and productive.

The University of New Hampshire Cooperative Extension is an equal opportunity educator and employer.
UNH, USDA, and NH Counties cooperating.

[Extension Home](#) | [Locations](#) | [Blog](#) | [Events](#) | [News](#) | [Resources](#) | [About](#)

[Privacy Policy](#)

University of New Hampshire - Main St. - Durham, NH 03824