



## ***North Country Updates - Agriculture, Conservation, Forestry***

This newsletter comes to you from UNH Cooperative Extension, Coös County Conservation District & USDA/Natural Resources Conservation Services, Lancaster, NH



### **Hello Everyone!**

Hey everybody I hope you are doing well. As we make our way towards summer, I am optimistic that UNH Extension will start to make its transition back into normalcy and I will be able to connect with you in person. With that in mind, if there is something Extension can help with please reach out. We have been available throughout the COVID-19 Pandemic and we still are. We also have been doing solo site visits as well when requested.

One thing to consider when you are working in the fields or enjoying the outdoors is ticks. Recently I've done some hiking around Lancaster and have found numerous ticks on me. Coming from central Maine, I'm no stranger to ticks and check myself for them diligently. For information about ticks and preventative measures you can take check out this UNH resource. <https://www.unh.edu/health/services/ticks-and-lyme-disease>



If you have a tick that you would like to get ID'd or tested the UNH lab is currently not accepting mail in samples right now. For tick ID you can take high quality pictures and send them to our ED Center via email at [answers@unh.edu](mailto:answers@unh.edu). The phone number for the Ed Center is 1-877-EXT-Grow if you have questions. If you do need to have the tick tested for tick-borne disease the UMASS TickReport is still up and running and the details of how to do that can be found here <https://extension.unh.edu/tickreport>

-Nick

## Events



### Webinar Series - Plant Health for Green Industries and More

**June 4 to July 9**, Thursdays, 7:00pm-8:00pm

The UNH Cooperative Extension Landscape & Greenhouse Team is offering six different pesticide credit webinars. One NH pesticide credit is available for each night. You can attend as many or as few as you like. Register and select the sessions you would like to attend. You will receive an email with a link to the webinar.

- June 4 - Choosing pesticides and using pesticide information to make good decisions. Presented by Jonathan Ebba, UNH Cooperative Extension, Landscape & Greenhouse Field Specialist in Hillsborough County
- June 11 - Pour-throughs, pH and potential acidity. Presented by Jonathan Ebba.
- June 18 - Tips for diagnosing plant problems, Presented by Dr. Cheryl Smith, UNH Cooperative Extension, Plant Health State Specialist.
- June 25 - Calibrating and calculating a spray tank. Presented by Jonathan Ebba.
- July 2 - Landscape weed management. Presented by Emma Erlen, UNH Cooperative Extension Education Center Program Coordinator.
- July 9 - Some benefits of applying silicon to plants. Presented by Dr. Muhammad Shahid, UNH Cooperative Extension Greenhouse & Nursery Production State Specialist.

[Register Here](#)



### North Country Lunch and Learns!

**June 10, July 15, August 12, September 9** (Wednesdays)

For years Lunch and Learns were a staple of Coös County Cooperative Extension's connection with the community. We have brought back the Lunch and Learns as a way for people to get together as we continue to practice social distancing. The lunch and learns last one hour and will be composed of a talk with time to discuss or ask questions. Our first event took place in May with a good turnout thanks to everyone who joined. Recordings of past events will be posted on our website.

So, bring your lunch and let's learn! 12:00-1:00pm  
June 10 - Backyard Chickens: Bird is the Word

July 15 - Tarping: What the Heck is That!  
August 12 - Asparagus: Where the Green Fern Grows  
September 9 - Send us your suggestions.

You only need to register once to attend either one or all events.

[Register Here](#)



## Northern New England Dairy Discussions

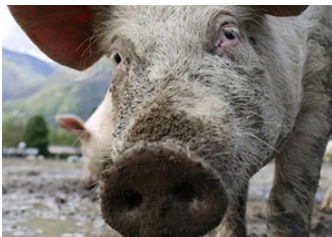
**June 16 - Tuesday, 7:00-8:30pm**

Thanks to you folks, the Northern New England Dairy Discussions were a success! Due to an ongoing need for information in the world of Dairy we will be offering monthly talks from regional dairy specialists and guests to discuss important and current issues. The next talk will focus on financial tools.

If you missed the original dairy discussion don't worry it is archived on our website.

[Register Here](#)

[Archives Here](#)



## Pig Workshop: From Tails to Snouts - The Ins & Outs of Raising Pigs

June 16, 17 & 18  
6:00pm-8:00pm

Are you thinking about raising pigs for yourself or your family? Do you already have pigs, but want to brush up on some of the basics? Join us for this three-part series on the ins and outs of what it takes to raise pigs successfully in New Hampshire. From regulations and housing to health and nutrition, we'll start with the basics and end with more in-depth topics you can apply to your herd immediately. Each session will cover something different, so be sure to sign on for all three!

June 16 - Regulations and Biosecurity

- Regulations, Reportable Diseases, and More; NH Department of Agriculture, Markets & Foods
- Protecting Your Herd with Good Biosecurity; Elaina Enzien, UNH Cooperative Extension

June 17 - Getting Started

- Site Selection, Housing and Fencing; Nick Rowley, UNH Cooperative Extension
- Animal Welfare, Handling and Processing Considerations; Elaina Enzien, UNH Cooperative Extension

- Insider Tips from NH Pork Producers

June 18 - Raising Backyard & Pastured Pigs

- Colt Knight, Assistant Extension Professor and Livestock Specialist, University of Maine Cooperative Extension, dives deeper into breeds, breeding, nutrition and health.

This meeting will be offered virtually and each session will be recorded.

[Register Here](#)

## In The News

### Timber Stand Improvement

Photos provided by Brendan Prusik, Natural Resources Field Specialist, UNH Cooperative Extension. Taken recently of an NRCS hardwood thinning project.



### Seedlings to Schools

Each spring UNH Extension and Coös County Conservation District distribute close to 2000 tree seedlings to K-12 students across Coös County. This is a tradition that has occurred for many decades! This year of course, seedling distribution could not happen in the classroom. The idea came up that perhaps we could coordinate something with the school lunch program to deliver seedlings with students' lunch. With cooperation from school administration seedlings were delivered with lunches as well as a few had open boxes outside the schools for pickup.

With amazing Team effort the tradition continued!

NH State Nursery, UNH Cooperative Extension, Coös County Conservation District, Boy Scouts of America, Lancaster Troop 219 and Cub Scouts Pak 219 and School Administration, we were able to prepare and deliver NH raised tree seedlings to North Country schools in May!

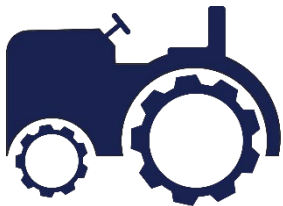


## Calculating Heifer Numbers and the Heifer Calculator

Heifers are ranked in the top three most costly factors to a dairy operation. Being so determining the correct number of Heifers for your farm is important.

UNH's Dr. Pete Erickson has created a worksheet that explains how to calculate this number while demonstrating a few easy to follow examples. We have also created a calculator for you to use, (which will be launched soon). This tool does the math for you!

[Access Cow-culator](#)



New Hampshire  
**AGRICULTURE**  
Daily COVID-19 Update

## All COVID-19 Agriculture Related Information (Food Safety, Labor, Ect.)

We have created a place on this website where you can easily find the answers to questions we have collected. You can also ask new questions through the "ask a question" button. Ultimately this website will be a platform where Extension and other members of the Ag Service industry can come together to provide answers to you. You will also find previously recorded webinars you may have missed.

---

**New Hampshire**  
*Department of Agriculture,  
Markets & Food*

## **NH Ag Resources Assisting with COVID-19 Issues**

The New Hampshire Department of Agriculture, Markets, and Food in partnership with UNH Cooperative Extension and the NH Agricultural Mediation Program has assembled a list of organizations that provide health information, technical and business consulting, and assistance with financial challenges for farmers coping with the health and financial impacts of the Coronavirus.

[NH Ag Resources](#)



## **Making Hay When the Sun Shines**

June is here and as spring transitions into summer it's time to make hay. Keep in mind that not all hay is created equally and practices you do during cutting and storage can greatly influence this nutritional quality of the hay. Here are a few examples!

### **Hay quality changes with the stage of crop development.**

As these grass plants mature, they move from a vegetative growth stage to a reproductive stage. In the vegetation stage there is a high accumulation of starches, sugars, proteins, and minerals. As this transition occurs there is an increase in plant size and greater amount of fiber produced. This leads to a lower concentration of nutrients reducing the overall digestibility of the future feed. The best stage to cut hay is around the early boot stage or before it heads out when there is a greater proportion of leaves to stems. Cutting hay at an earlier stage will result in less yield but the nutritional quality should compensate from this loss.



### **Dry down**

important to dry hay down as quick as possible. The goal is 15-18% moisture content. As the hay dries chemical processes are still happening within the plant. Simply put, the good stuff (sugars) from photosynthesis are being lost (CO<sub>2</sub> & H<sub>2</sub>O) during drying through plant respiration causing a decrease in the energy of the feed and a greater proportion of fiber resulting in less digestibility. Of course, this is not always possible, but the quicker the better. Cutting hay in the morning of a sunny day will lead to a faster dry down time.

### **Storage**

It's best to store hay in a dry location with good ventilation. This environment is less conducive to the growth of mold that can occur on hay and will ultimately lead to a higher quality hay and a greater amount of hay that can be safely fed out.

For a more detailed dive into haymaking check out these UNH Extension Fact Sheets!

[Fact Sheet - Hay-Making](#)

[Fact Sheet - Hay-Quality](#)

---

## **Two Interactive Maps to Help you Find Food**



### **The New Hampshire Farm Products Map: -- Please Add you Farm -**

In response to the developments associated with COVID-19 and the resulting adaptations being made by farmers as they market their products, UNH Cooperative Extension has developed a statewide New Hampshire Farm Products Map. This is the only statewide map of it's kind.

This tool will make it easy for farmers to update their information on an interactive online map so that consumers can quickly and easily learn where and how to purchase their products in light of the changing situation associated with COVID-19.

Farms and related companies that want to be included in the map should use the new site entry form through the new link.

[New Link - Add Your Farm](#)

---

[NH Farm Products Map](#)



### **The New Hampshire Food Map**

UNH Extension worked with the public assistance community to create the New Hampshire Food Access Map, an online platform that enables organizations to offer their services and share their needs with the public.

The map shows locations where:

- free or low-cost food is offered
- volunteers are needed
- donations are accepted

[NH Food Map](#)

---

## **North Country Fruit & Vegetable Seminar and Tradeshow**

Thanks to all who have taken the time to fill out this survey. We are still taking in feedback so if you haven't taken the survey please do!

The North Country Fruit & Vegetable Seminar and Tradeshow has been absent for a couple years. This is an event we at Extension would like to bring back. While the possibility of a 2020 conference is still up in the air due to the COVID-19 pandemic, we are trying to get the ball rolling and are asking for your input. In the past, attendance had dwindled down to a point where it wasn't feasible for our invited vendors. We are trying to recreate this event to better serve the people of the North Country and this is a great time to start. We would appreciate your thoughts and ideas on the matter and are willing to move away from the traditional structure of the conference if necessary. Please fill out this anonymous survey in the provided link it will help us take the first step into bringing this fun and informative event back.

If you have any questions or want to provide additional insight, please contact Nick at [nicholas.rowley@unh.edu](mailto:nicholas.rowley@unh.edu) or at 603-788-4961.

[Fruit & Veg Seminar Survey](#)

---

**Coös County Conservation District (CCCD)**





## Coös County Conservation District

4 Mayberry Lane  
Lancaster NH 03584  
603-788-4651 ext 102

Visit our website - [cooscountyconservation.org](http://cooscountyconservation.org)

email - [da.cccd@gmail.com](mailto:da.cccd@gmail.com)

Our office is located in the USDA Service Center,  
Route 3, Lancaster, NH

## Soil Health Rental Equipment

Click on the equipment for more information.



[Wood Ash Spreader  
& Rental Terms](#)

[Coös County](#)



[Hi-Tunnel Tool  
Loan Program,  
List of Tools &  
Loan Process](#)

[Coös County](#)



[No-Till Seeder  
& Rental Terms](#)

[Grafton County](#)

The KFD-72 is 6' wide and capable of planting 9 rows, with 8" spacing. KASCO recommends a 33HP tractor, with sufficient lift capacity to handle approximately 1000 lbs. on back.



[Aerway  
& Rental Terms](#)

[Grafton County](#)

AWMP-075-AG-4 Salford AerWay. 45-75HP tractor with hydraulics recommended. Cultivation width 7.5'. Weight 2150 lbs.

## Home or Garden Question?



Monday through Friday from 9:00 a.m. to 2:00 p.m. highly trained master gardeners are available to answer your questions about gardening, lawns, pests, fruits and vegetables, food safety and more. For research-based information you can trust, pick up the phone, send an email or stop by today!

[Education Center & Info Line](#)

The [Education Center](#) at UNH Cooperative Extension offers a number of services including:

- Answers to gardening questions from Cooperative Extension Master Gardener residents via email and the Hotline 877-398-4769 or walk-in assistance.
- Master Gardener Volunteer Training Educational Programs for the general public.
- Public presentations by Master Gardener Volunteers on topics such as seed starting, composting, container gardening, and seed saving.

For more information on a variety of horticulture topics visit the UNH Cooperative Extension [website](#).



## When in doubt.. UNH Cooperative Extension ID services can help.

Soil Testing Services

Insect Identification Services

Plant Diagnostic Lab

NH Bugs

## Additional Links

Subscribe to this and other  
UNH Extension newsletters

Archives  
of this newsletter

UNH Extension Agriculture

UNH Extension Natural Resources

Coös County Conservation District

USDA / NRCS in NH

Coös County UNH Cooperative Extension  
629 Main Street  
Lancaster, NH 03584

Monday - Friday, 8:00 a.m. - 4:00 p.m.

For more information  
[visit our website](#), [email us](#), or call 603-788-4961



About UNH Cooperative Extension  
Extension is at work in every New Hampshire county, making the state's key industries stronger, developing vibrant communities and municipal leaders, fostering healthy families and an informed and engaged citizenry, and keeping the state's natural resources healthy and productive.

The University of New Hampshire Cooperative Extension is an equal opportunity educator and employer.  
UNH, USDA, and NH Counties cooperating.

[Extension Home](#) | [Locations](#) | [Blog](#) | [Events](#) | [News](#) | [Resources](#) | [About](#)

[Privacy Policy](#)